

A Joke



What do you call **an AI** that's always making mistakes?

MACHINE LEARNING

^credits ChatGPT



imagine you are going to present in a seminar about AI, please share a few jokes as an opening



Ladies and gentlemen, before we delve into the exciting world of AI, let's warm up with a few lighthearted jokes. Remember, even artificial intelligence needs a good laugh now and then. So, without further ado, here are a couple of AI-themed jokes to tickle your funny bone:



Large Scale Video AI

Vikram Gupta
Founder & CEO



80%
of the Internet
traffic



2x
growth in 2 years¹



15
cameras per 100
citizens²



Video is HUGE



**AI is
HUGE**



\$400Bn

AI Market³
by 2025



50K+
repositories
in GitHub



\$70
per TeraFlop
for Compute⁴



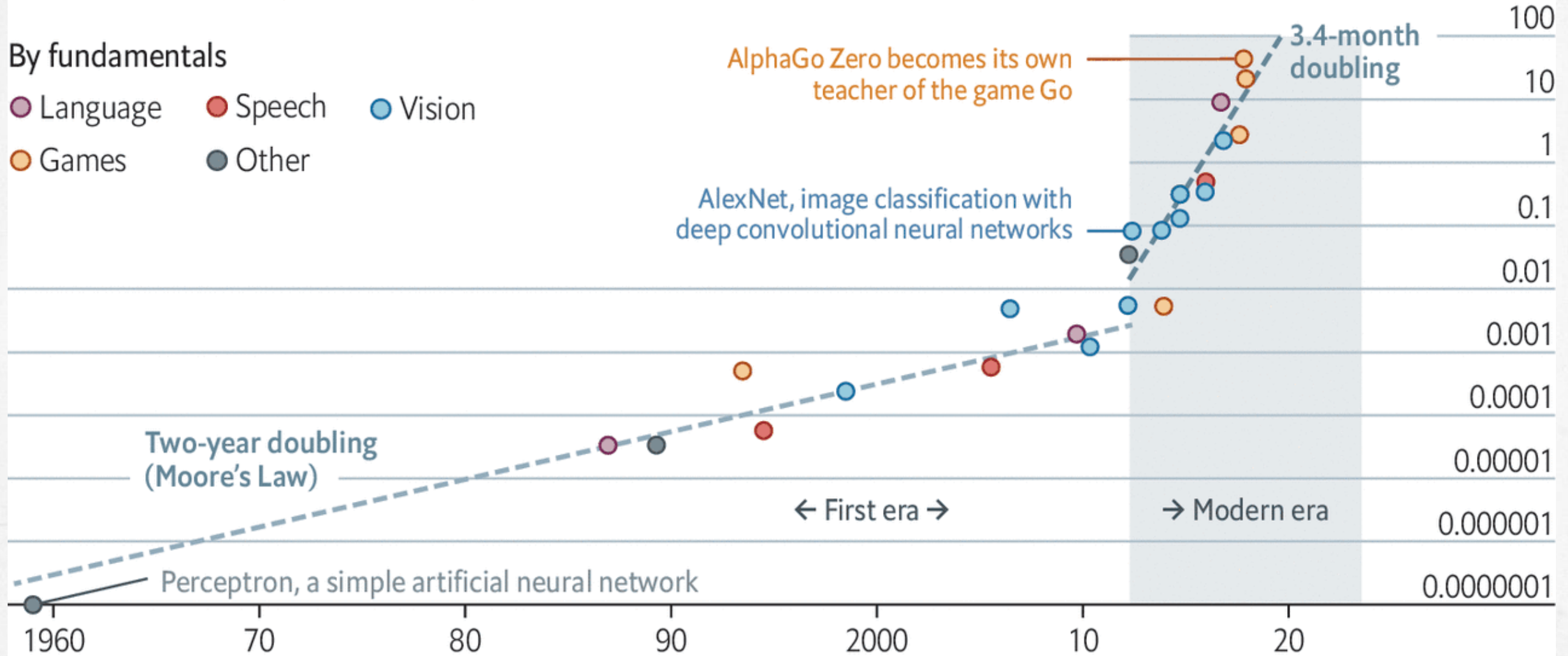
Deep and steep

Computing power used in training AI systems

Days spent calculating at one petaflop per second*, log scale

By fundamentals

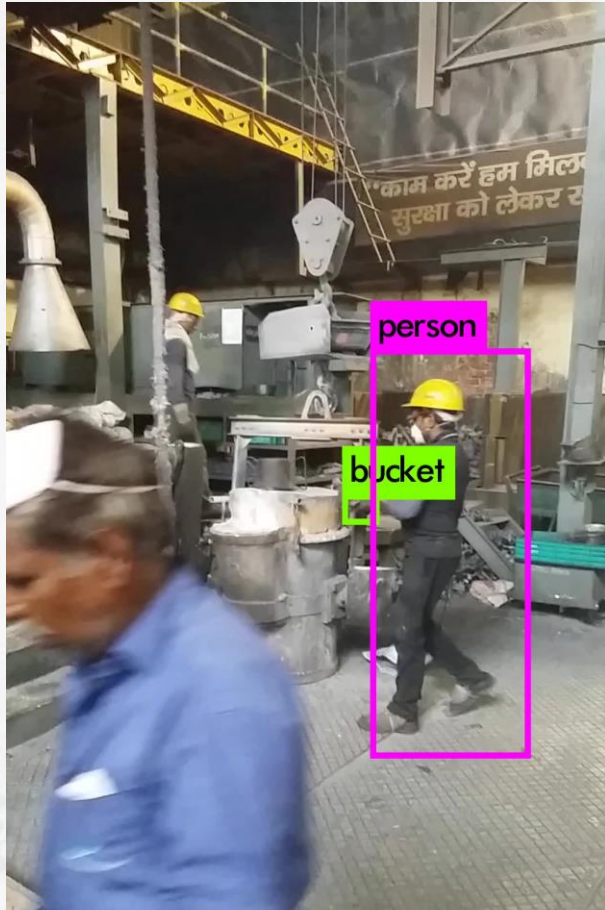
- Language
- Speech
- Vision
- Games
- Other



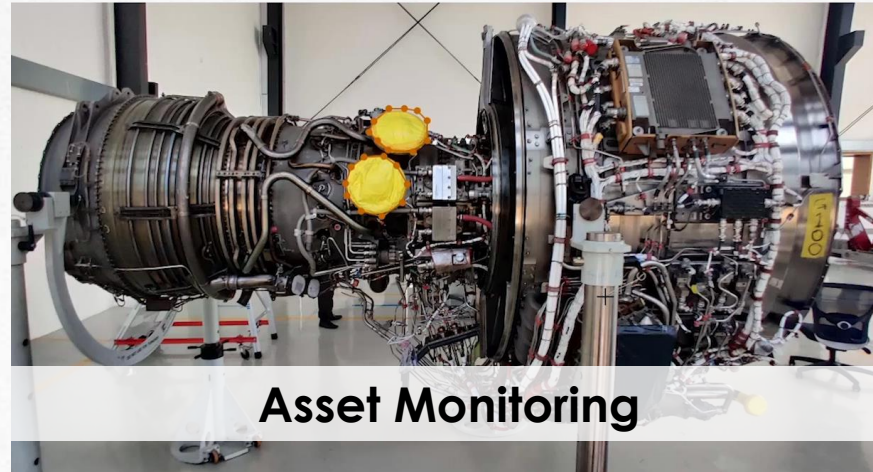
Source: OpenAI

*1 petaflop=10¹⁵ calculations

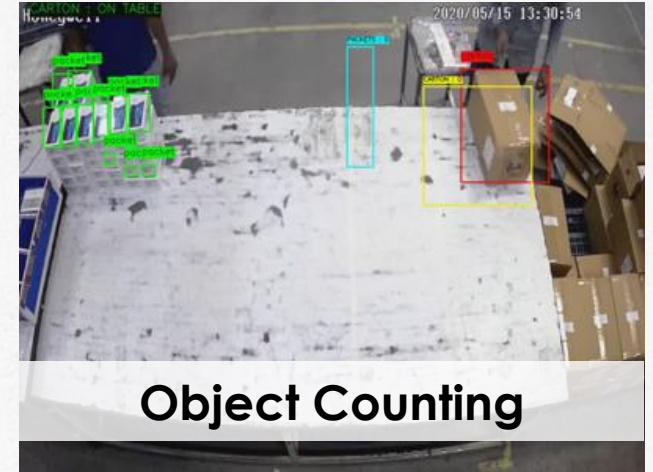
Diverse Video AI Apps



Process Monitoring



Asset Monitoring

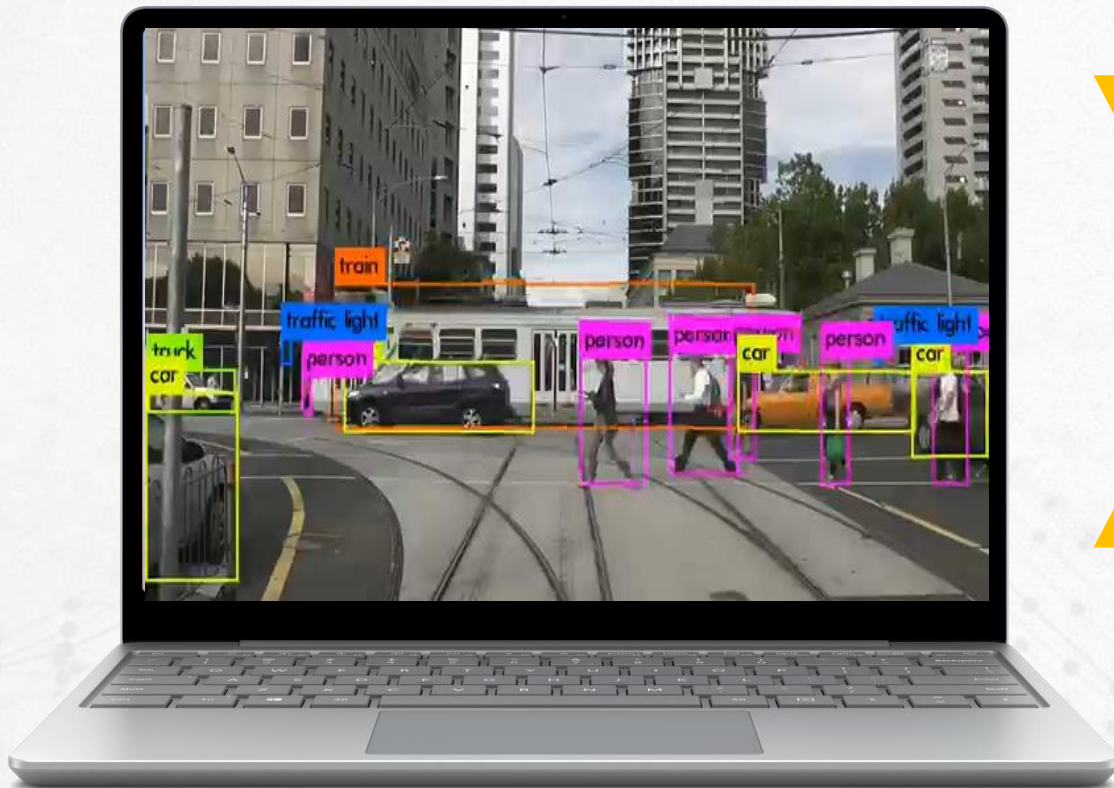


Object Counting

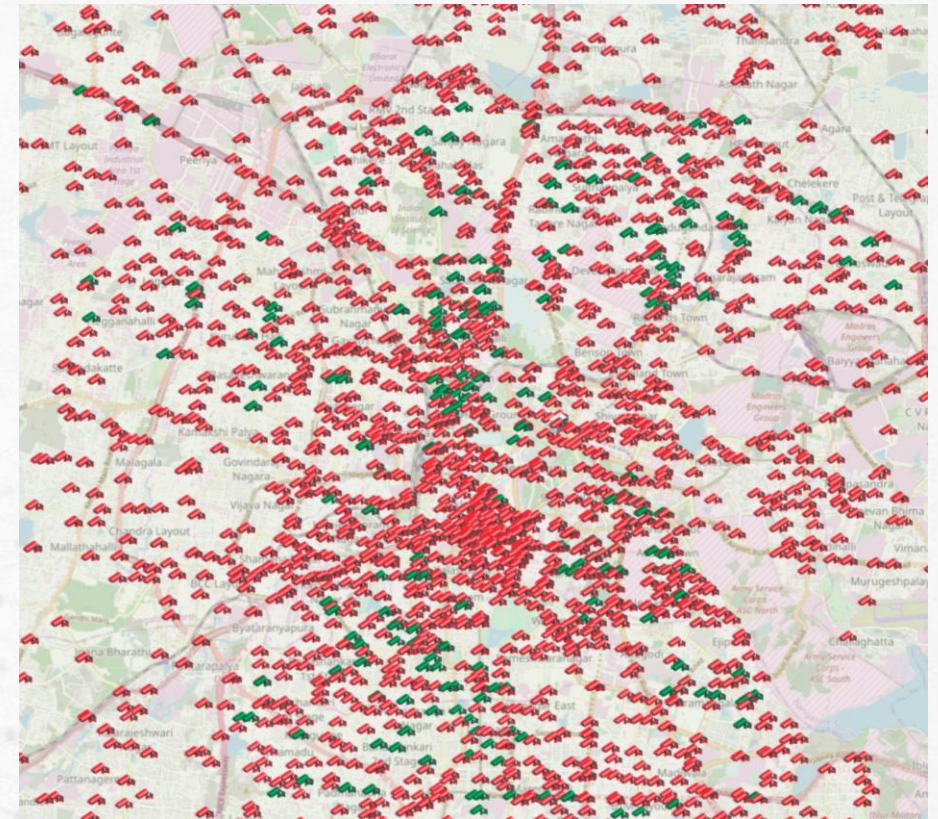


Dense Crowd Estimation

AI in a Lab



AI in Production



Marketplace of Video AI Apps – AppStack



Organisations Users Orders

Register App

Create Organisation



Search



Sort List View



Licence Plate Recognition

v 1.00

Sourav Paul

Recognises the license plate by identifying license number



Person Collapsing

v 22.2

Shantanu Tripathi

Generates an alert if a person falls and lays on the ground for a certain duration.



Camera Health and Tampering...

v 22.2

Nikhil Dugar

Alerts when the view of the camera view is either

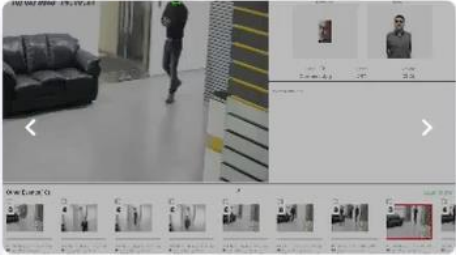


Vehicle Count and Classificati...

v 22.2

Nikhil Dugar

Gives an alert on each vehicle and each alert specifies the

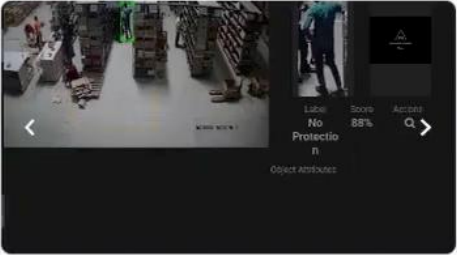


Facial Recognition

v 22.2

Shaurya Goel

This app detects the face of a person and recognises it from a pre-registered database and displays the label on the...

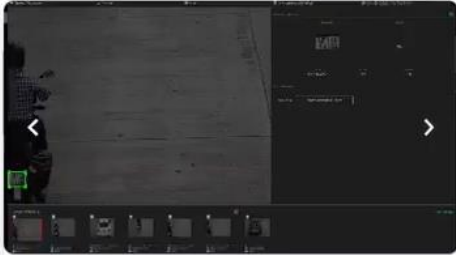


Person Protection Equipment...

v 22.2

Stavya Datta

Detecting and enforcing if employees in factory are wearing



Speed Violation

v 22.2

Nachiketa Hebbar

Raises an alert when a vehicle crosses a specified speed limit in the camera view



Forklift Speed Violation

v 22.2

Nachiketa Hebbar

Raises an alert when a forklift crosses a defined speed limit





Bengaluru Safe City

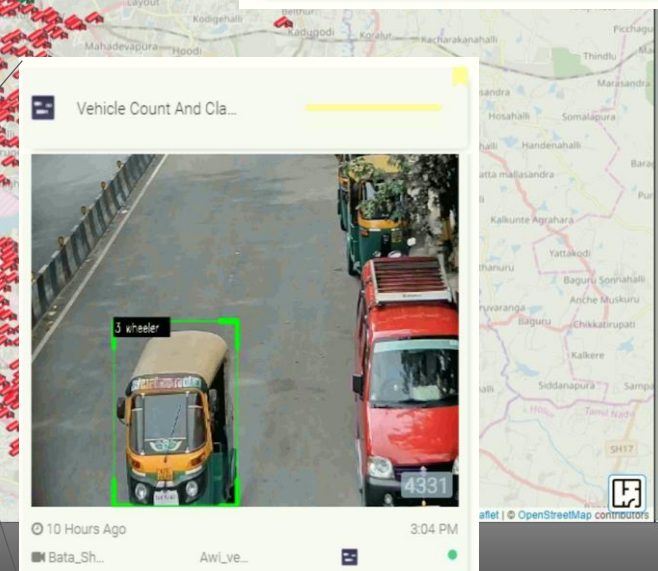
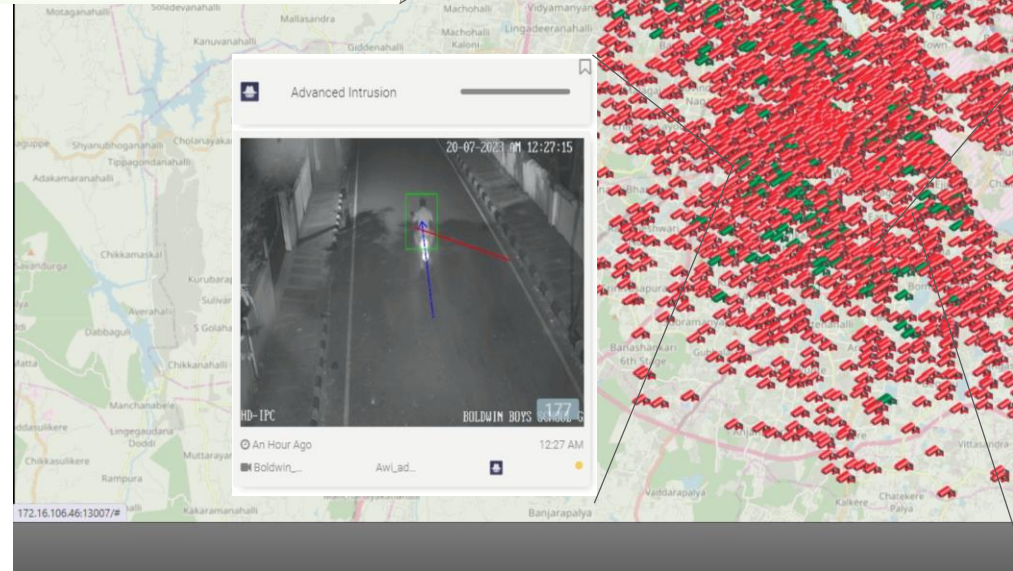
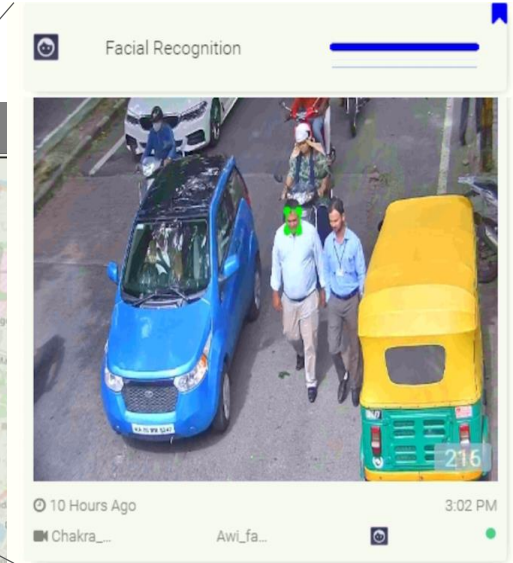
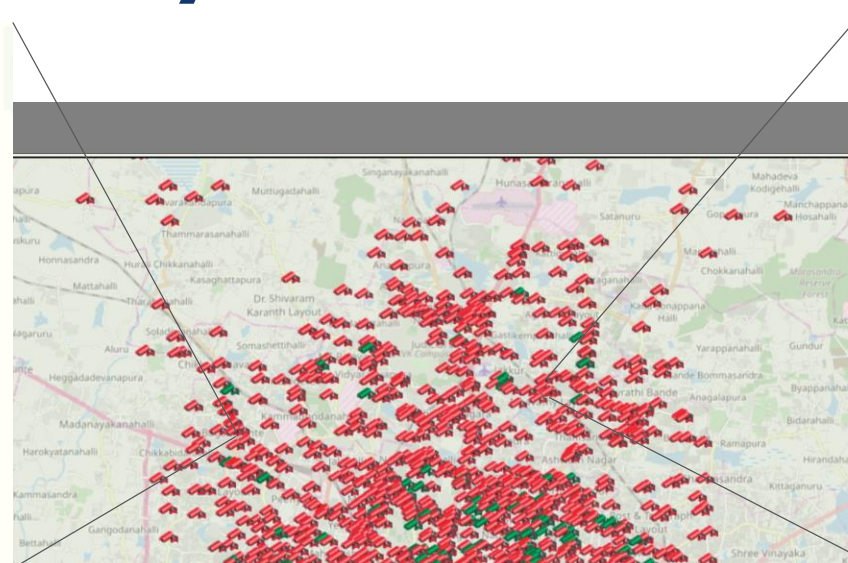
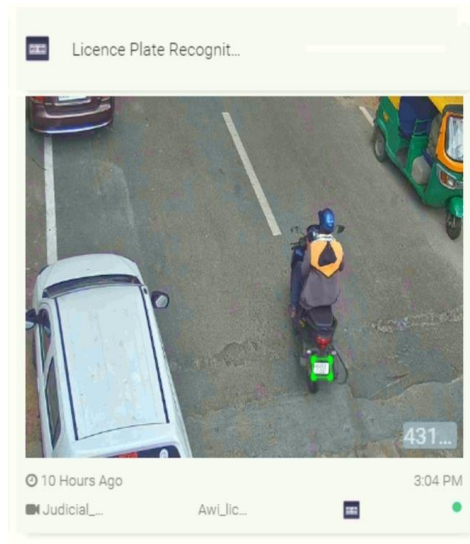
In partnership with
Honeywell

7000

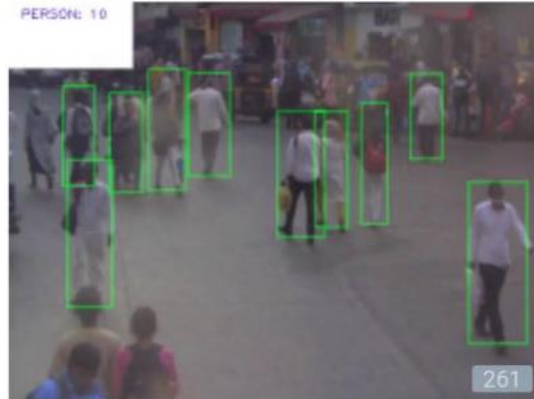
Cameras

12

Apps



Crowd Detection



A Few Seconds Ago 4:12 PM Thane St...

Directional Detection



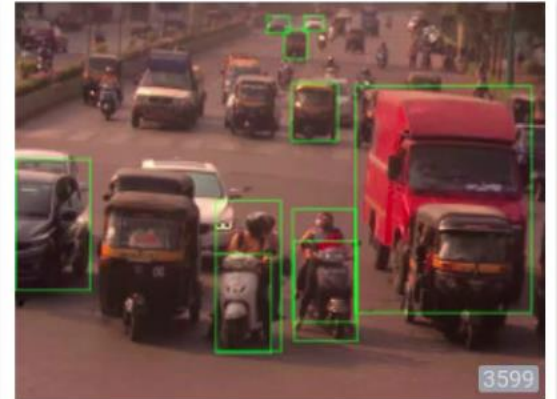
8 Minutes Ago 4:05 PM Cadbury ... LINE_C...

Entry Exit Detection



A Few Seconds Ago 4:12 PM Cadbury ... LINE_C...

Object Classification



A Few Seconds Ago 4:12 PM Cadbury ...

PERSON: 7



22 Hours Ago 6:33 PM Thane St...



21 Hours Ago 6:49 PM Cadbury ... LINE_C...



21 Hours Ago 7:30 PM Cadbury ... LINE_C...



16 Hours Ago Cadbury ...

LOW

Object Counting

Cadbury Junction-5

more

Human Behavior Analysis

The image displays a complex user interface for human behavior analysis, featuring several overlapping panels and data visualizations.

- Top Panels:**
 - Crowd Alert:** Shows a camera feed with a person highlighted in a red box. It includes a 'PERSON: 4' indicator and a 'Detected Objects (1)' table with columns for 'Detection' and 'Match'.
 - Garbage Detection:** Similar to the Crowd Alert panel, it shows a camera feed and a 'Detected Objects (1)' table.
 - Advanced Face Mask Detection:** The central focus, showing a person walking on a path. A green overlay indicates mask detection. It includes a 'Detected Objects (1)' table with columns for 'Detection' and 'Match'. Below this, a detailed view shows:

Label	Score	Actions
Mask	97%	🔍
- Event Lists:**
 - Other Events(9):** A list of event thumbnails with timestamps (e.g., Aug 27, 2020, 1:24:16 PM) and icons for Crowd Alert, Cam-Entry, and Low severity.
 - Other Events(17):** A larger list of event thumbnails with timestamps (e.g., Aug 27, 2020, 12:57:42) and icons for Garbage Detection, Cam-Garbage, and Low severity.
 - Other Events(14):** A list of event thumbnails with timestamps (e.g., Sep 14, 2020, 3:30:15 PM) and icons for Cam-Entry, Cam-Entry, and Critical severity.
 - Other Events(44):** A long horizontal list of event thumbnails with timestamps (e.g., Nov 28, 2020, 8:22:41 AM) and icons for various detection types and severity levels (Low, Critical).
- Bottom Right:** A 'Load more' button is visible.



Delhi Safe City

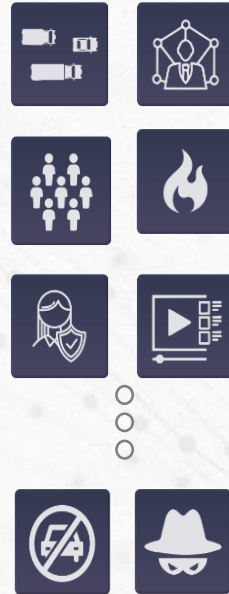
In partnership with



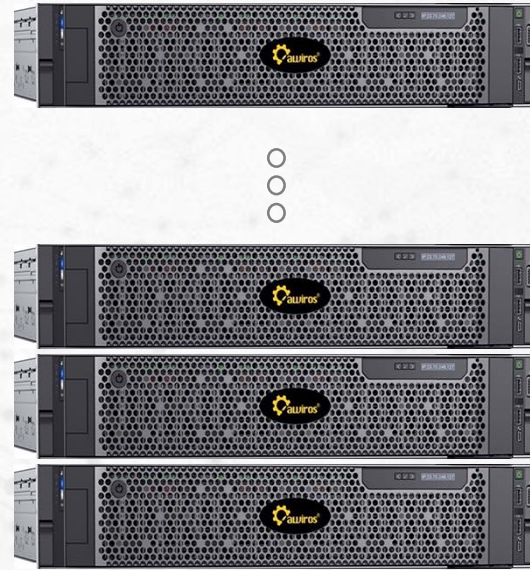
12K
Cameras



15
Apps



120
Servers



Warehouse Automation

for a German Customer



Visual Inspection

Pratt & Whitney in collaboration with India's Awiros launches AI-based aircraft engine inspection tool

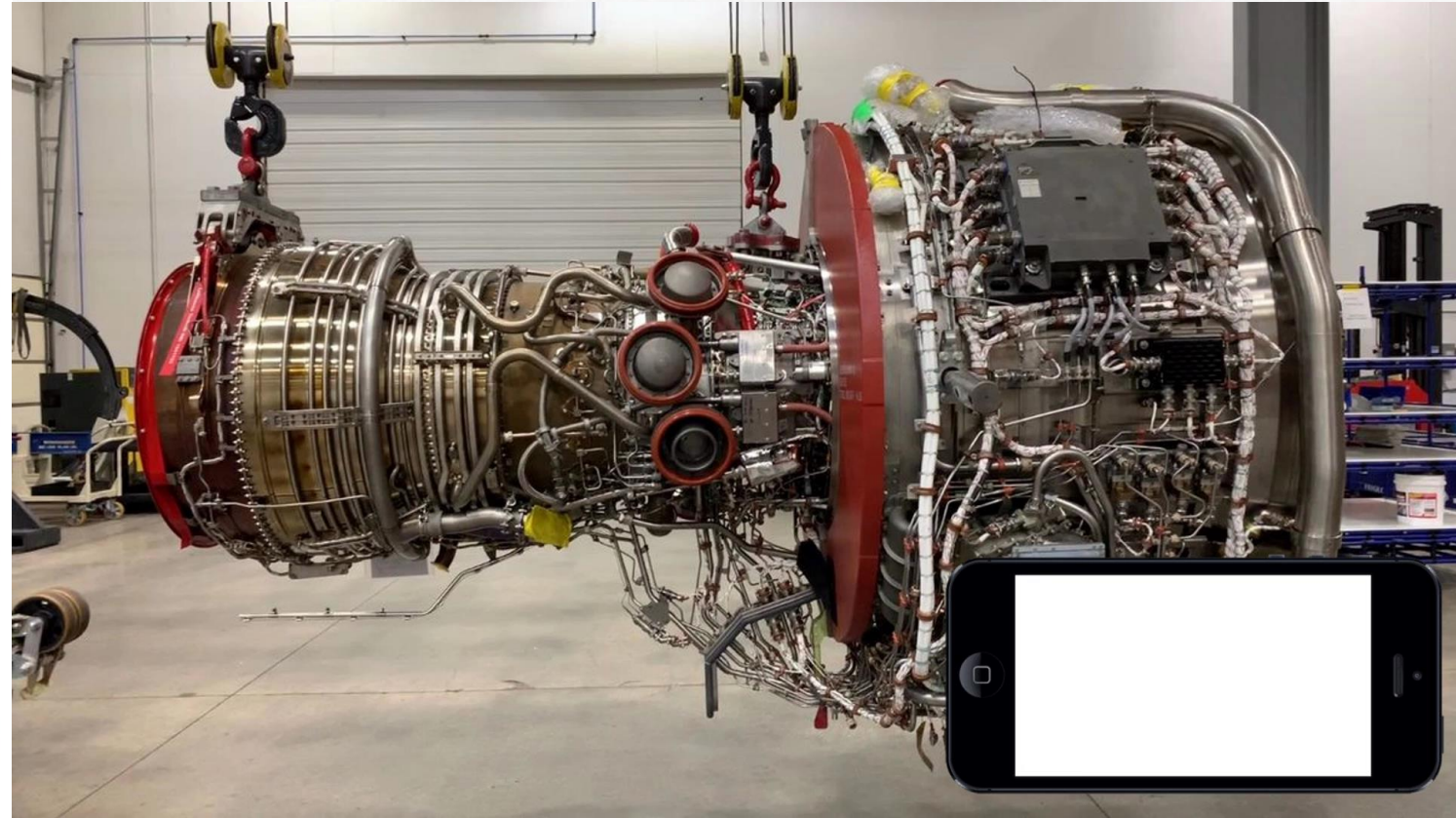
By leveraging cutting-edge computer vision technology in conjunction with the Awiros Video Intelligence Operating System (OS), Percept enables users to capture images and videos of aircraft engines using their mobile devices.

Written by [FE Online](#)

Updated: June 20, 2023 15:17 IST



PW and Awiros team using the Percept Tool to scan a V2500 engine.





Esteemed Customers



Delhi Safe City
Largest Video AI Deployment in India



Bengaluru Safe City.
Largest Video AI Deployment in India



J&K Safe City



Aircraft Engine Inspection



Large Scale Camera Health Monitoring



Mercedes-Benz
The best or nothing.

Awiros Platform and 8 apps for R&D center



Contactless Attendance



Facial Recognition for 250+cameras



Awiros OS becomes a part of Pune Smart City's Centre of Excellence (CoE)



First of its kind Crowd Estimation & Management



Esteemed Customers



ICP Attari



IndianOil



The Awiros Platform – for Large Scale Video AI Apps



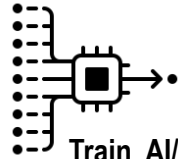
Awiros Video AI Operating System

A platform on which all Video Analytics applications run concurrently.



Development Platform

Developers can develop new Video AI applications, train and monetize their AI models using real-world data



Train AI/ML

Meta data generated from the application can be annotated and batches of data ingested back into the Algorithms which can be trained natively onto the platform. The complete pipeline is handled as a project



Infinite Scalability

Run a single application on any number of video sources, or multiple applications on a single video source across users, locations and edge or datacenter devices



Seamless Application Orchestration

The platform would allow users to have complete control over the configuration and deployment of every individual application.



Pre-Integrated with every component

With the platform already integrated with components such as VMSs, ICCCs, etc., there won't be a need to integrate individual solutions with multiple disparate entities



Solution Marketplace

App Marketplace that hosts solutions.

- Simplifies discovery of new solutions
- Levels the playing field for smaller players
- Enables large scale consumption and democratization of video AI apps.